

# MONTHLY MEMBERSHIP PROGRESS REPORT

LOCATION AUSTRALIA

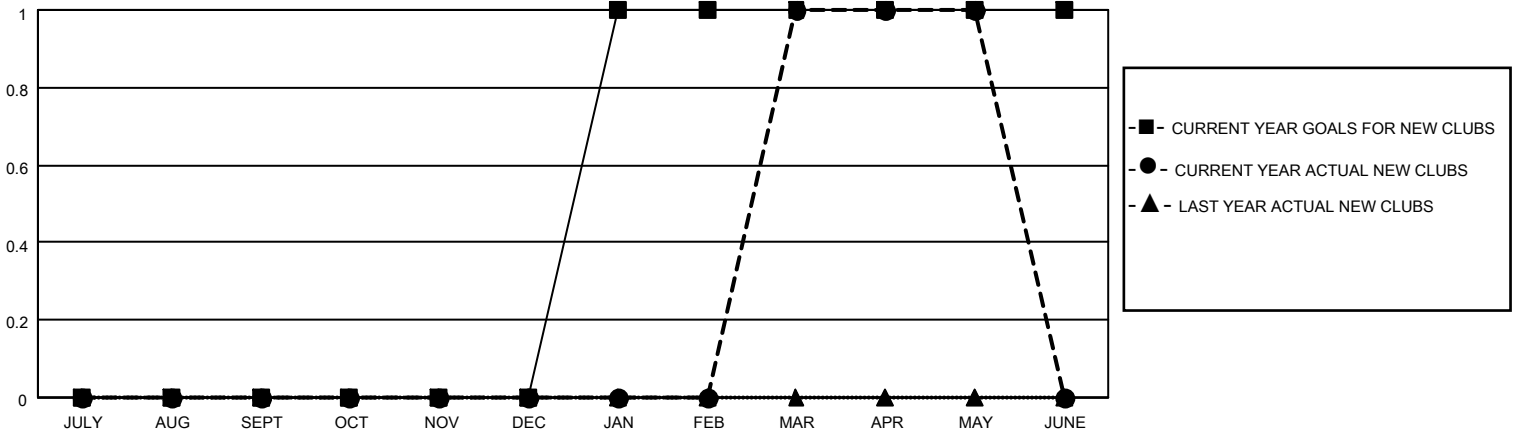
District 201W2

Results as of: 5/31/2023

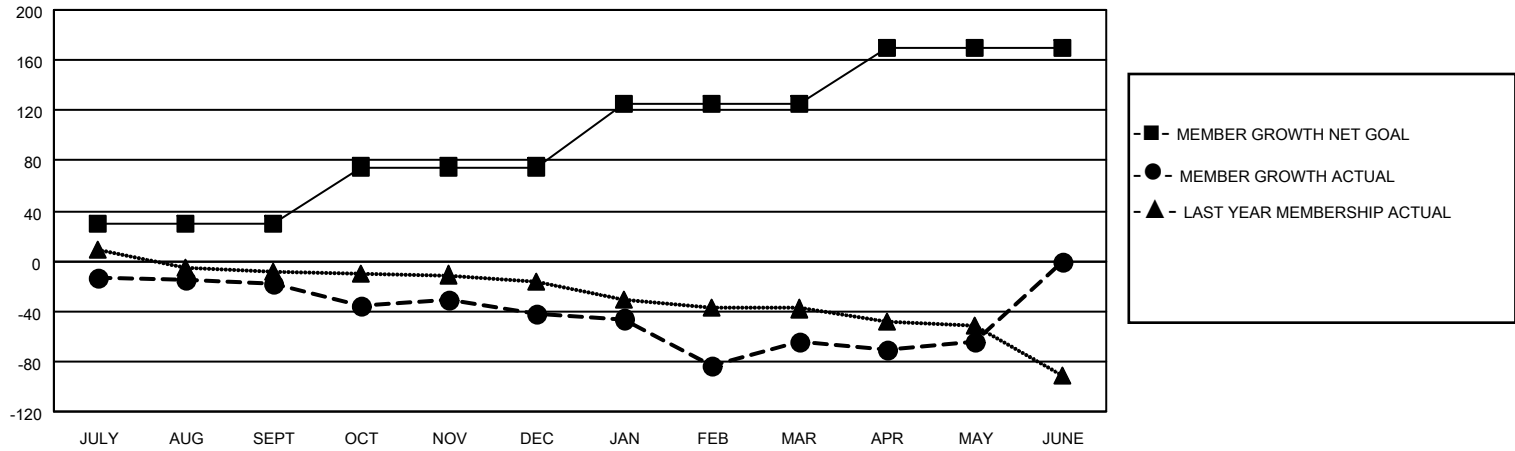
Clubs			
RESULTS FOR 2022-2023			
QUARTER	NEW CLUB GOAL	NEW CLUBS	DROPPED CLUBS
JULY/AUG/SEPT	0	0	2
OCT/NOV/DEC	0	0	0
JAN/FEB/MAR	1	1	0
APR/MAY/JUNE	0	0	0

Members			
RESULTS FOR 2022-2023			
QUARTER	MEMBER GROWTH NET GOAL	MEMBER GROWTH ACTUAL	DROPPED MEMBERS ACTUAL (including transfers)
JULY/AUG/SEPT	30	45	48
OCT/NOV/DEC	45	48	62
JAN/FEB/MAR	50	63	77
APR/MAY/JUNE	45	37	30

**GOALS AND ACTUAL NEW CLUBS CUMULATIVE**



**GOALS AND ACTUAL MEMBERS CUMULATIVE**



**DROPPED CLUBS: 2**

**43 CLUBS OF 63 ADDED 1 OR MORE NEW MEMBERS**

**GENDER DISTRIBUTION**

MALE	818 (65.81%)
FEMALE	425 (34.19%)
NON BINARY	0 (0.00%)
PREFER NOT TO ANSWER	0 (0.00%)

**DROPPED MEMBERS**

[CLICK HERE FOR CUMULATIVE MEMBERSHIP DATA](#)

DECEASED	26
CLUB CANCELLED	0
OTHER	191
<b>TOTAL</b>	<b>217</b>

TOTAL FAMILY UNIT MEMBERS	187
FAMILY MEMBERS PAYING HALF DUES	95